

DWA

Dielectric Waveguide Antenna

Datasheet

28 GHz Dual Linear Polarized Antenna

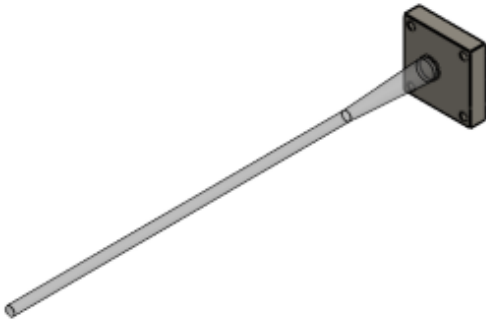
ED2-0011-010000





Features

- Dual Linear Polarized Antenna
- >20dB cross pol isolation
- 28 GHz center frequency
- 1 GHz bandwidth
- 22.5° - 3 dB beamwidth
- Frequency stable over temperature
- Impedance: 50Ω
- Operating Temp: -55°C to +125°C
- Connectorized SMPM package
- Selectable gain and beamwidth options



Applications

- 5G Wireless Communications
- Radar
- Jammer
- General Purpose Wireless
- Internet of Things (IOT)

The 28 GHz dual linear polarized antenna is a high-performance, low-cost, GPPO/SMPM component. No calibration or tuning is required – just plug in and go. This antenna represents an alternative to phased-array antennas which require processing circuitry and calibration routines. The DWA requires less power than phased-array antennas with comparable performance.

Parameter	Frequency Range (GHz)	Min.	Typ.	Max.
Gain (dBi)	27.5 – 28.5	15	18	
-3dB beamwidth (degrees)			22.5	
Input Power (dBm)				+40
Size (L x W)	5.94 x 0.88 x 0.88 inches 150.88 x 22.35 x 22.35 mm			
Connectors	SMPM			



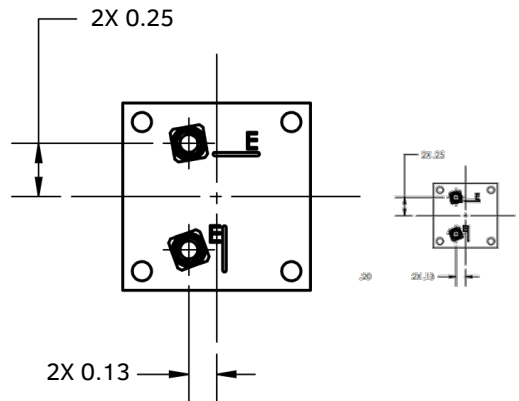
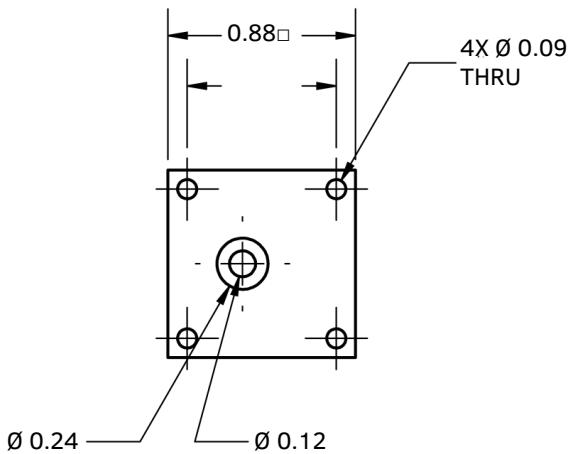
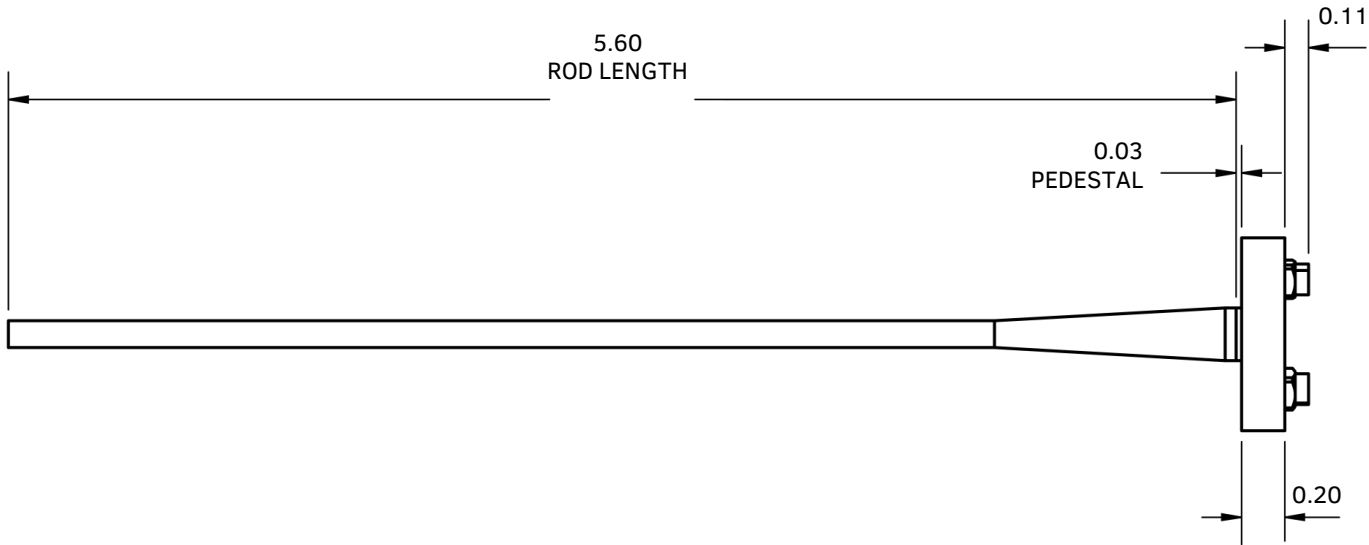


DWA

Datasheet

28 GHz Dual Linear Polarized Antenna

ED2-0011-010000



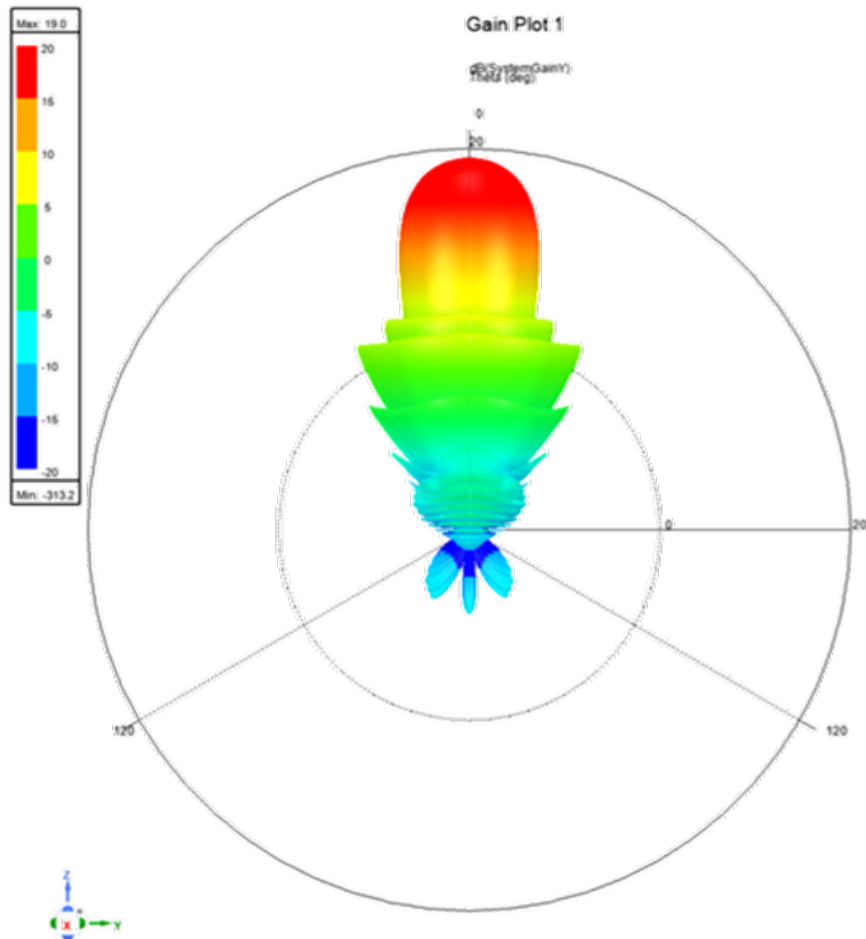


DWA

Datasheet

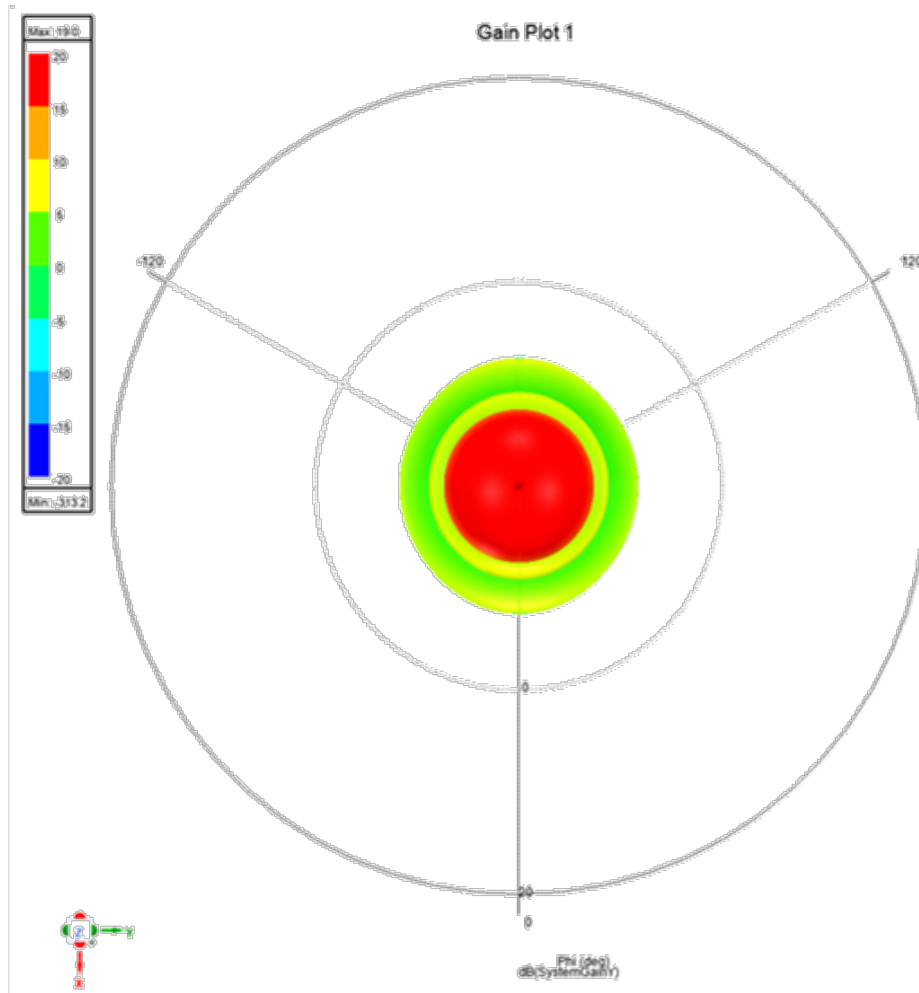
28 GHz Dual Linear Polarized Antenna

ED2-0011-010000



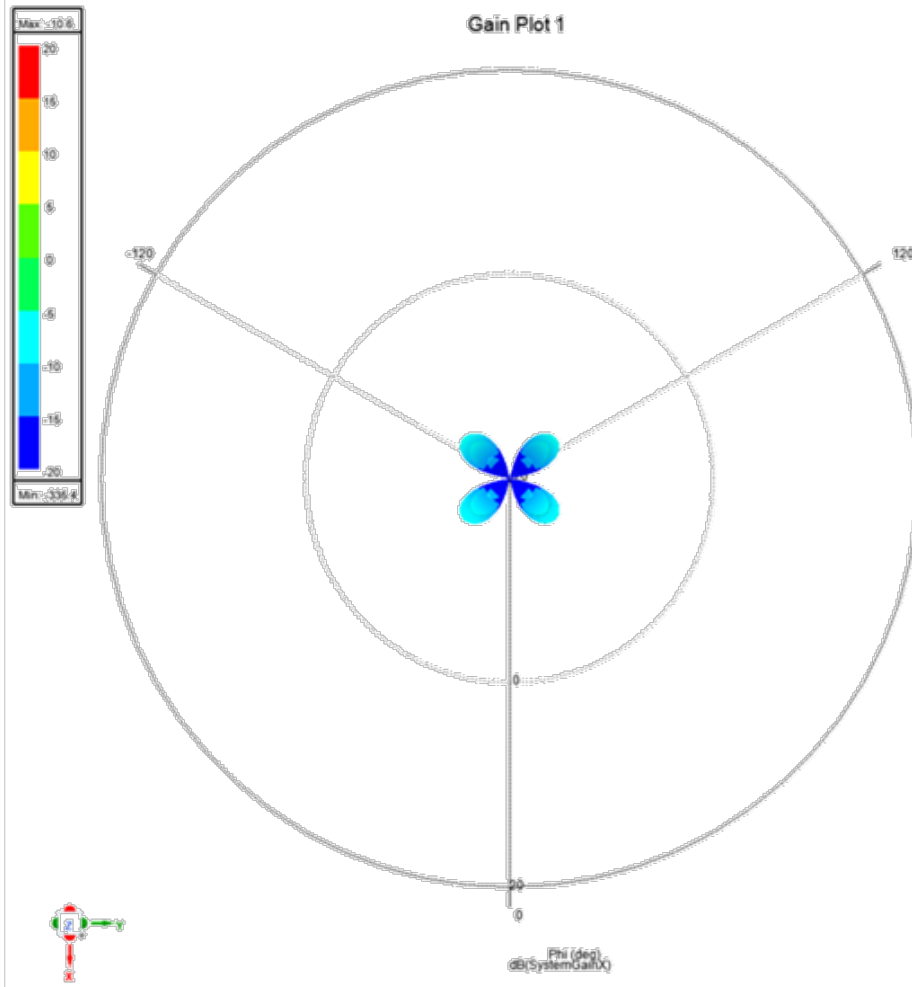


DWA
Datasheet
28 GHz Dual Linear Polarized Antenna
ED2-0011-010000





DWA
Datasheet
28 GHz Dual Linear Polarized Antenna
ED2-0011-010000





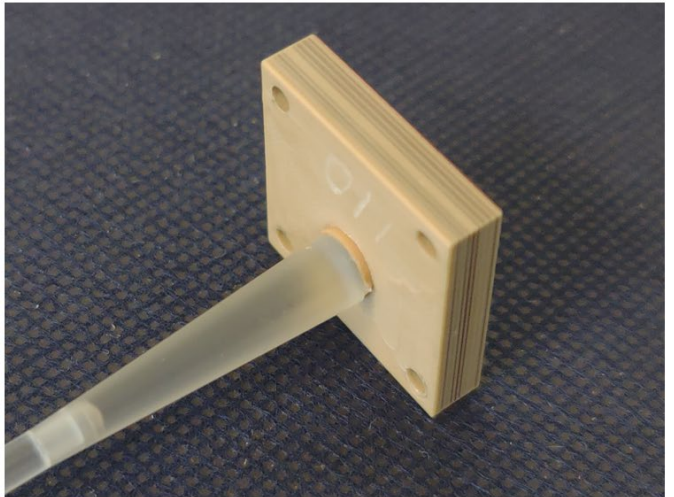
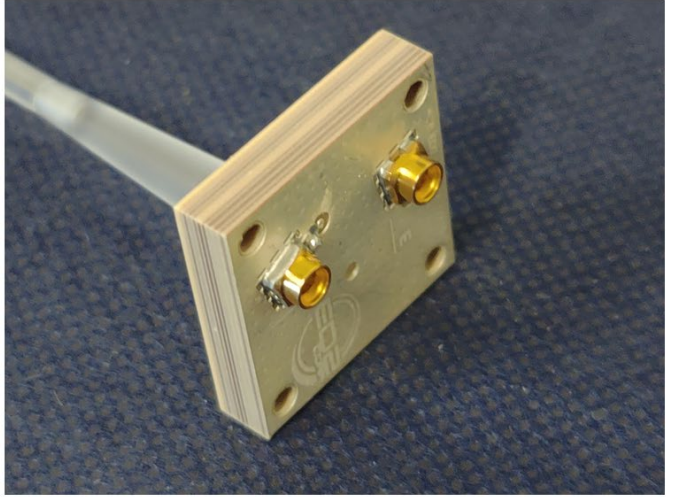
DWA

Datasheet

28 GHz Dual Linear Polarized Antenna

ED2-0011-010000

Connector type: SMPM
Gender: Female



**Other frequencies and gain profiles are available.
Contact your sales rep for more information or visit:**

www.ed2corp.com/antennas

DWA DATA SHEET – DU V2