



3.75 GHz Bandpass Filter

Data Sheet

BP038BW02S

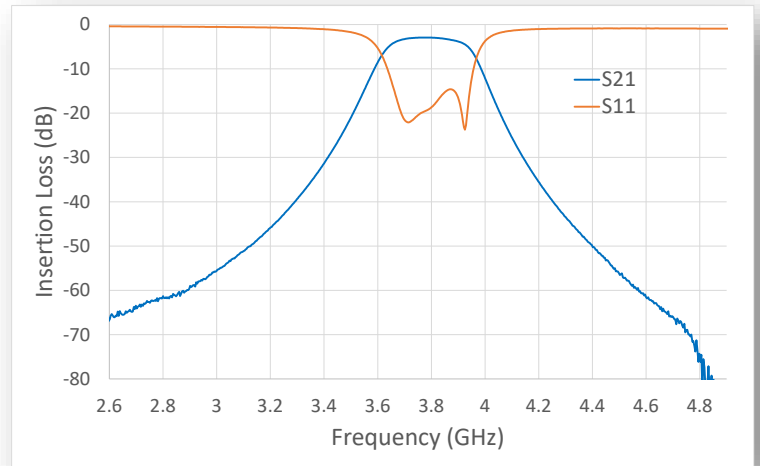
FEATURES

- Low Insertion Loss
- Extreme out of band rejection to +18 GHz
- Common footprint up to 10GHz
- Customizable to other frequencies and bandwidths
- Wafer level process (low manufacturing cost)
- Extremely stable over temperature
- Characteristic Impedance: 50Ω
- -55°C to +125°C
- Moisture Sensitivity Level: MSL2A
- Surface Mount BGA Package

APPLICATIONS

- C-Band cellular devices
- Sub-6GHz 5G Radio
- Radar, EW and defense
- General purpose wireless
- Roofing Filter, complementary to BAW/SAW

FUNCTIONAL BLOCK DIAGRAM



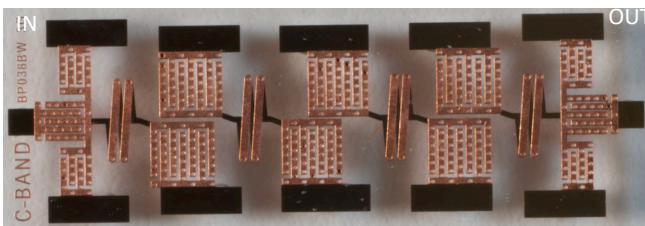
Typical Data

Parameter	Frequency Range (GHz)	Min	Typ. (actual)	Max
Insertion Loss (dB)	3.65 – 3.85 GHz		2.9	4
VSWR (1dB BW)			1.5	2.0
Low Side Rejection (dB)	DC- 3 GHz	-50		
High Side Rejection (dB)	4.5GHz – 18GHz	-50	-65	
Input Power(dBm)				+40
Size (L x W x H)	0.327 x 0.110 x 0.028 in 8.3 x 2.8 x 0.71 mm			

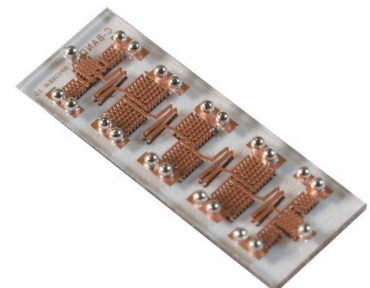
GENERAL DESCRIPTION

ED2's C-band Bandpass Filter is a fused silica (glass) high-performance, low cost, BGA-type surface mount component. The filter typically has a <3 dB insertion loss over a 200 MHz bandwidth. The filter's excellent rejection makes it a perfect roofing filter in complement to SAW/BAW applications. Filter was specifically designed for cellular c-band applications. This small size filter has minimal variation in performance and is also highly repeatable from filter to filter. The filter is a RoHS-compliant industry-standard device.

Top View



Isometric View



Rev. 11

Information furnished by ED2 is believed to be accurate and reliable. However, no responsibility is assumed by ED2 for its use, nor for any infringements of patents or other rights of third parties that may result from its use. Specification subject to change without notice. No license is granted by implications or otherwise under any patent or patent rights of ED2. Trademarks and registered trademarks are the property of their respective owners

Document Feedback

7636 N. Oracle Road, Tucson, Arizona 85704, U.S.A.

Tel: +1-520-341-8310

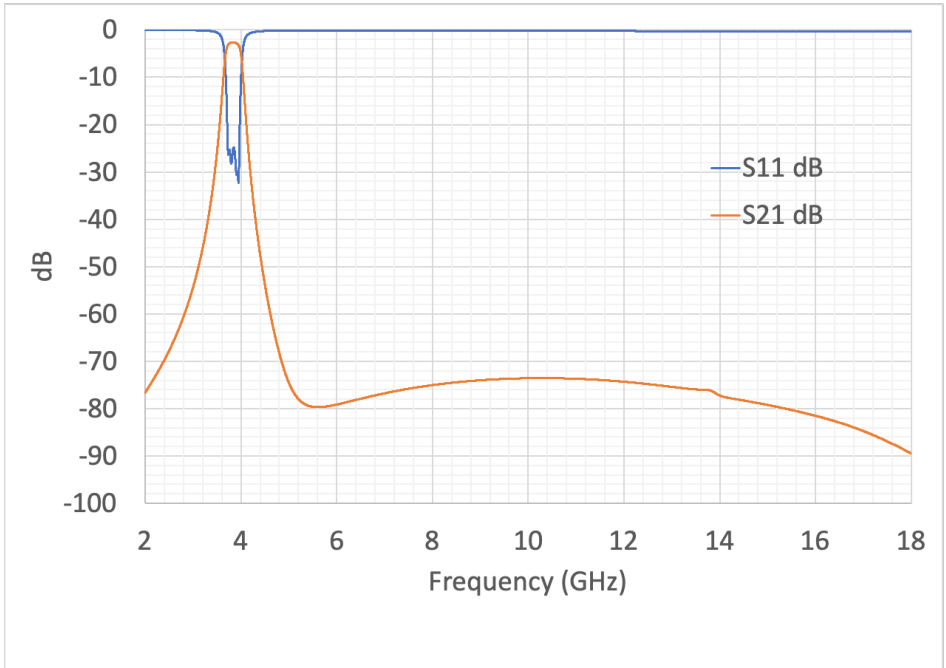
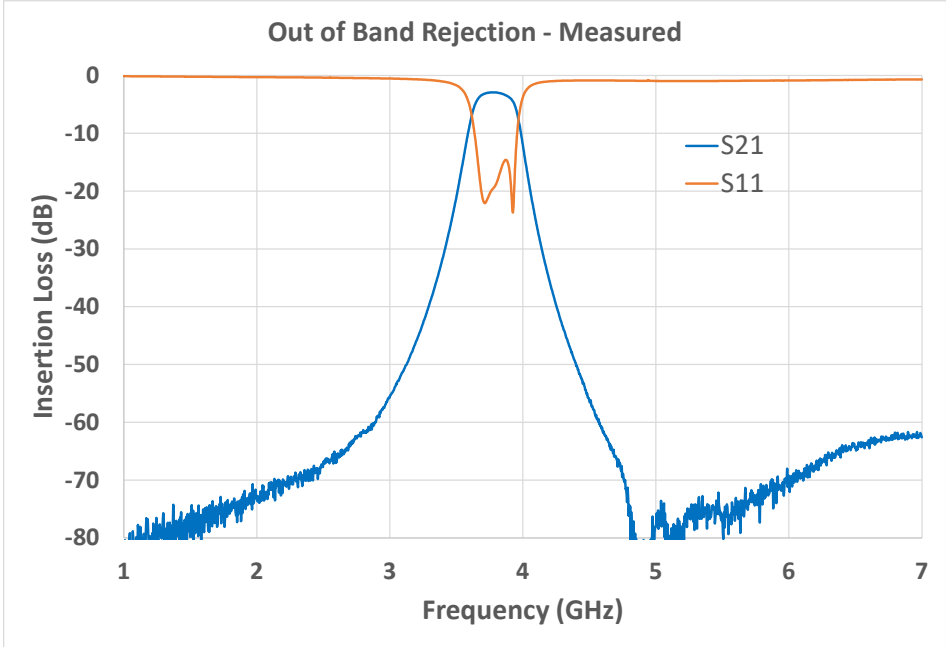
©2022 ED2 Corp, All Rights reserved

www.ed2corp.com



3.75 GHz Bandpass Filter

Data Sheet **BP038BW02S**



Document Feedback

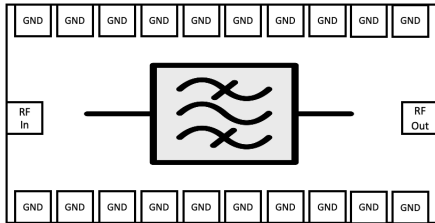


3.75 GHz Bandpass Filter

Data Sheet

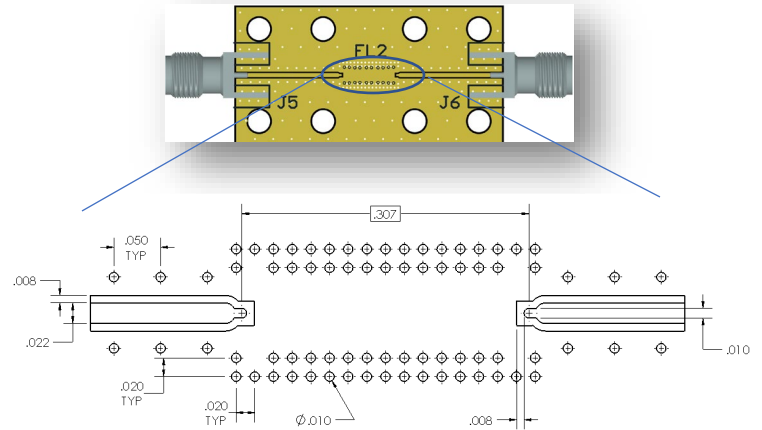
BP038BW02S

RECOMMENDED BOARD FOOTPRINT



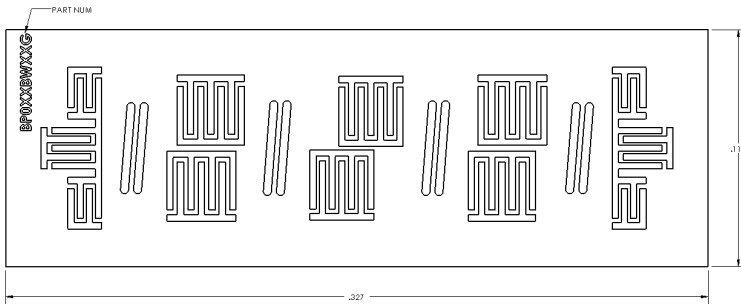
Functional Block Diagram

GCPW:
 W=22mils
 G=8mils
 H=14mils
 Er=3.7

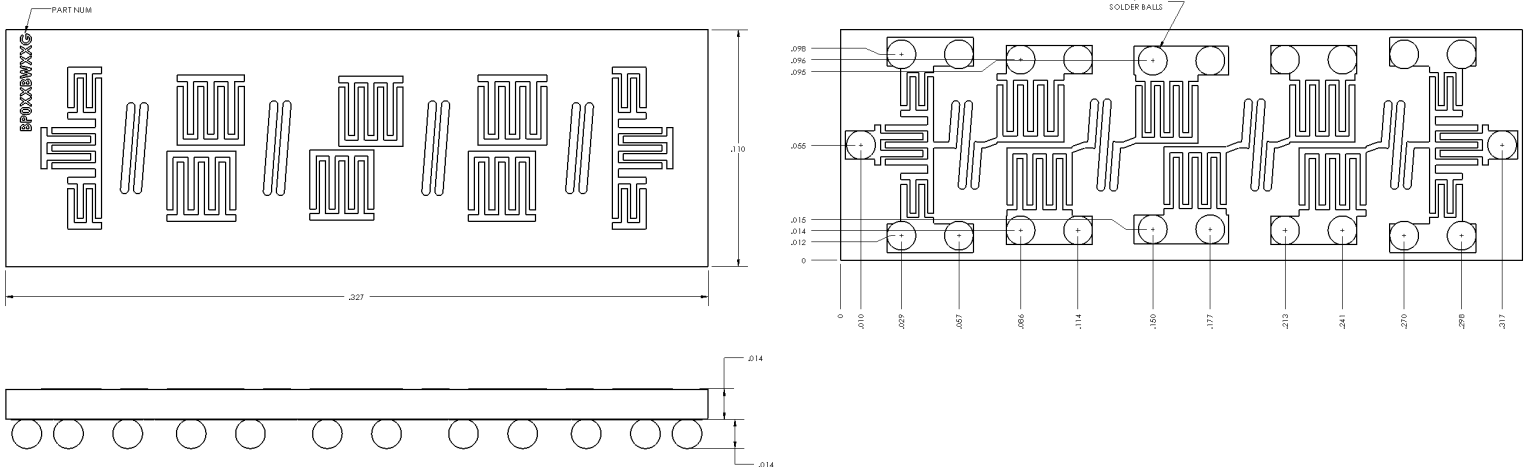


COMPONENT OUTLINE

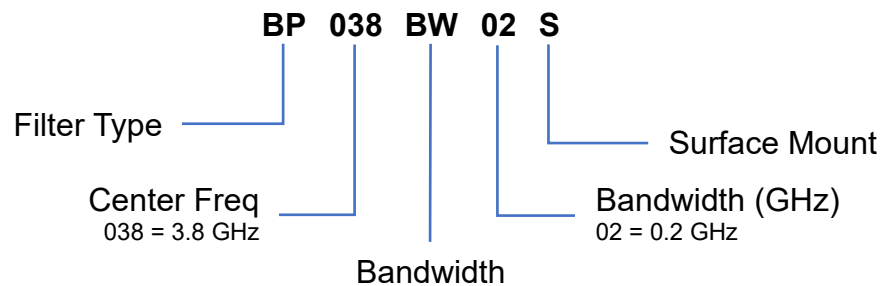
Top View



Bottom View



PART NUMBER DESCRIPTION



Rev. 11

Document Feedback

Information furnished by ED2 is believed to be accurate and reliable. However, no responsibility is assumed by ED2 for its use, nor for any infringements of patents or other rights of third parties that may result from its use. Specification subject to change without notice. No license is granted by implications or otherwise under any patent or patent rights of ED2. Trademarks and registered trademarks are the property of their respective owners

7636 N. Oracle Road, Tucson, Arizona 85704, U.S.A.

Tel: +1-520-341-8310

©2022 ED2 Corp, All Rights reserved

www.ed2corp.com