



3.55GHz Bandpass Filter

Data Sheet

BP036BW01S

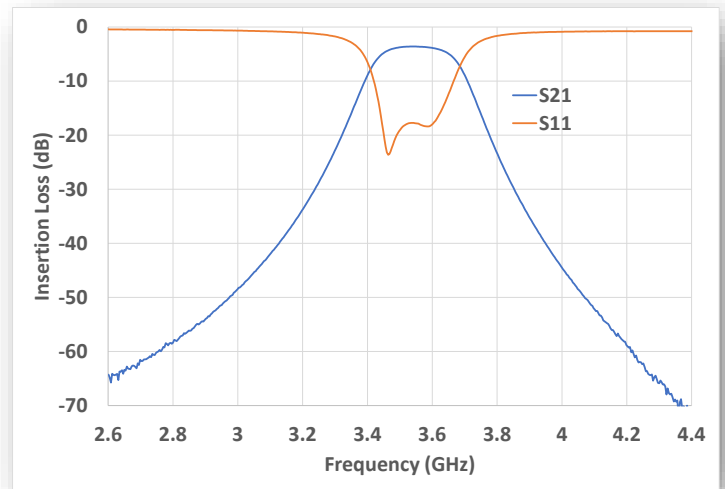
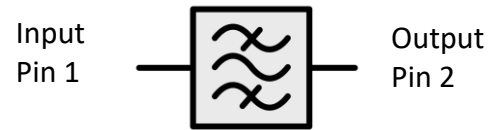
FEATURES

- Low Insertion Loss
- Extreme out of band rejection to +18 GHz
- Common footprint up to 10GHz
- Customizable to other frequencies and bandwidths
- Wafer level process (low manufacturing cost)
- Extremely stable over temperature
- Characteristic Impedance: 50Ω
- -55°C to +125°C
- Moisture Sensitivity Level: MSL2A
- Surface Mount BGA Package

APPLICATIONS

- CBRS devices
- Sub-6GHz 5G Radio
- Radar, EW and defense
- General purpose wireless
- Roofing Filter, complementary to BAW/SAW

FUNCTIONAL BLOCK DIAGRAM



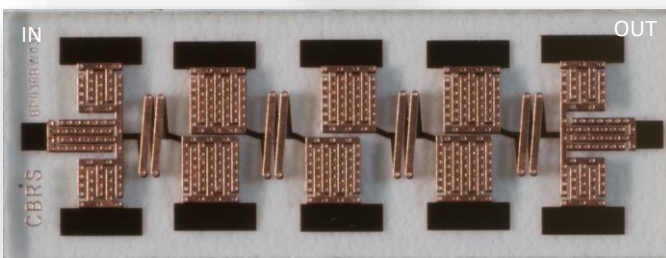
Typical Data

GENERAL DESCRIPTION

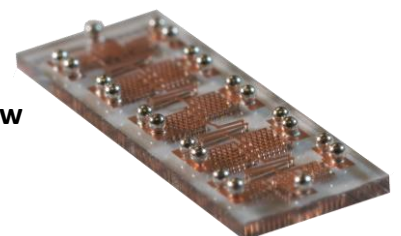
ED2's 3.55 GHz Bandpass Filter is a fused silica (glass) high-performance, low cost, BGA-type surface mount component. The filter typically has a 3.7 dB insertion loss over a 100 MHz bandwidth. The filter's excellent rejection makes it a perfect roofing filter in complement to SAW/BAW applications. This small size filter has minimal variation in performance and is also highly repeatable from filter to filter. The filter is a RoHS-compliant industry-standard device.

Parameter	Frequency Range (GHz)	Min	Typ. (actual)	Max
Insertion Loss (dB)	3.5 – 3.6		3.7	4.5
VSWR (1dB BW)			1.5	2.0
Low Side Rejection (dB)	DC- 2.85 GHz	-50	-70	
High Side Rejection (dB)	4.2GHz – 18GHz	-50	-60	
Input Power(dBm)				+40
Size (L x W x H)	0.327 x 0.110 x 0.028 in 8.3 x 2.8 x 0.71 mm			

Top View



Isometric View



Rev. 9

Document Feedback

Information furnished by ED2 is believed to be accurate and reliable. However, no responsibility is assumed by ED2 for its use, nor for any infringements of patents or other rights of third parties that may result from its use. Specification subject to change without notice. No license is granted by implications or otherwise under any patent or patent rights of ED2. Trademarks and registered trademarks are the property of their respective owners

7636 N. Oracle Road, Tucson, Arizona 85704, U.S.A.

Tel: 1-520-341-8310

©2022 ED2 Corp., All Rights reserved

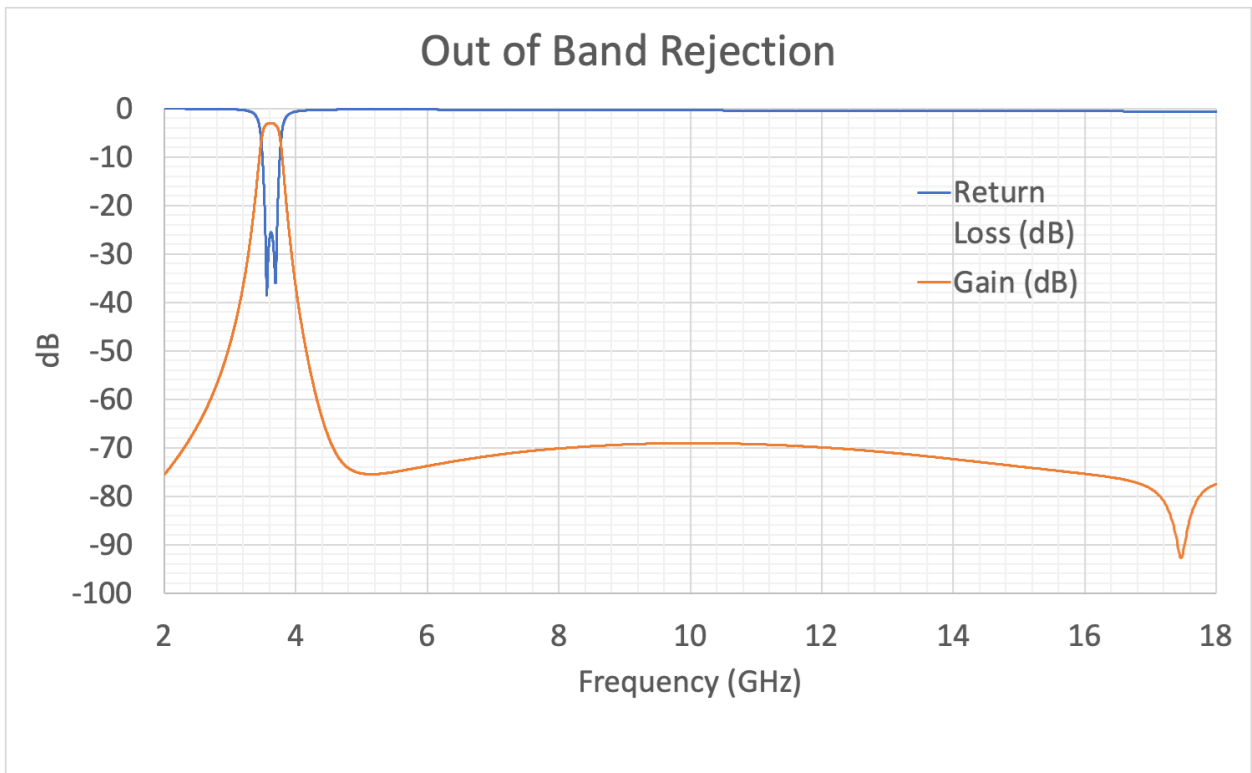
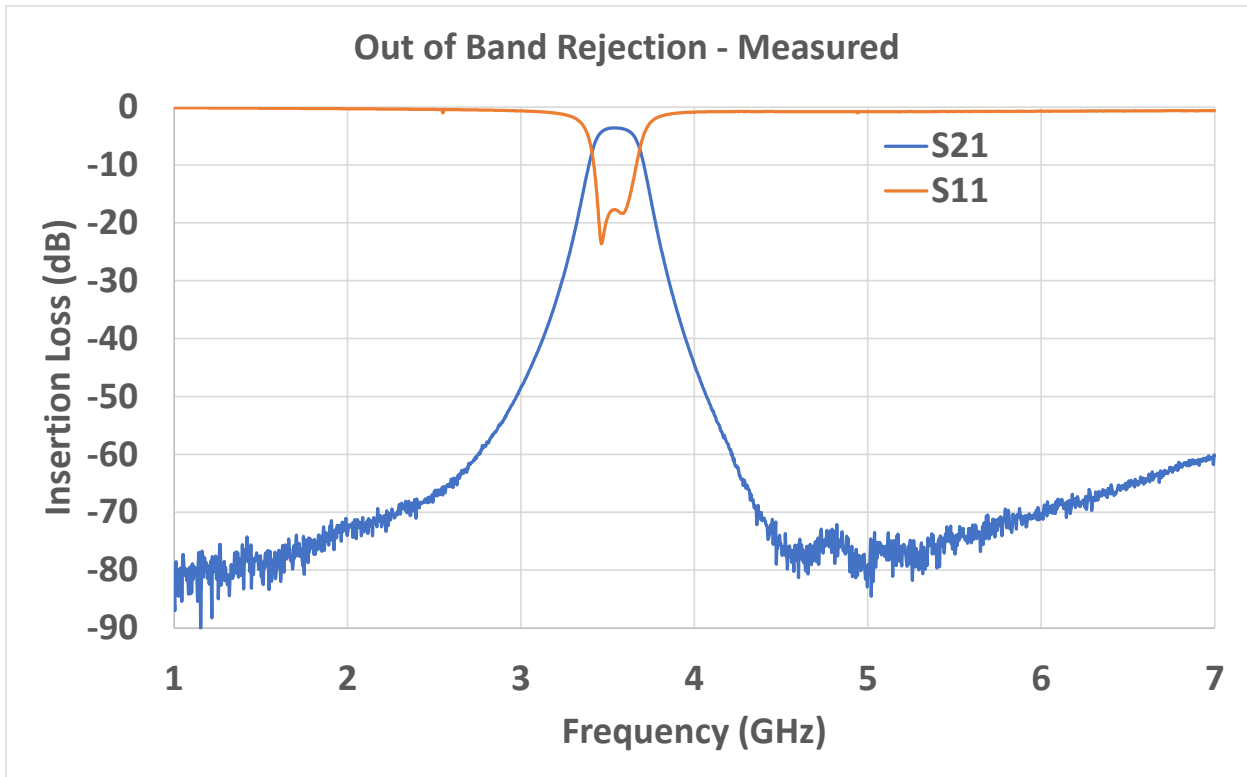
www.ed2corp.com



3.55GHz Bandpass Filter

Data Sheet

BP036BW01S



Rev. 9

Document Feedback

Information furnished by ED2 is believed to be accurate and reliable. However, no responsibility is assumed by ED2 for its use, nor for any infringements of patents or other rights of third parties that may result from its use. Specification subject to change without notice. No license is granted by implications or otherwise under any patent or patent rights of ED2. Trademarks and registered trademarks are the property of their respective owners

7636 N. Oracle Road, Tucson, Arizona 85704, U.S.A.

Tel: 1-520-341-8310

©2022 ED2 Corp., All Rights reserved

www.ed2corp.com

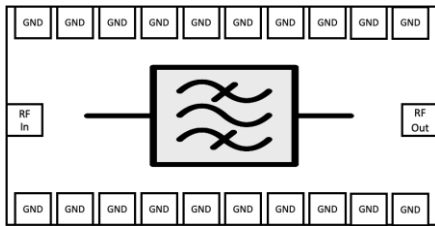


3.55GHz Bandpass Filter

Data Sheet

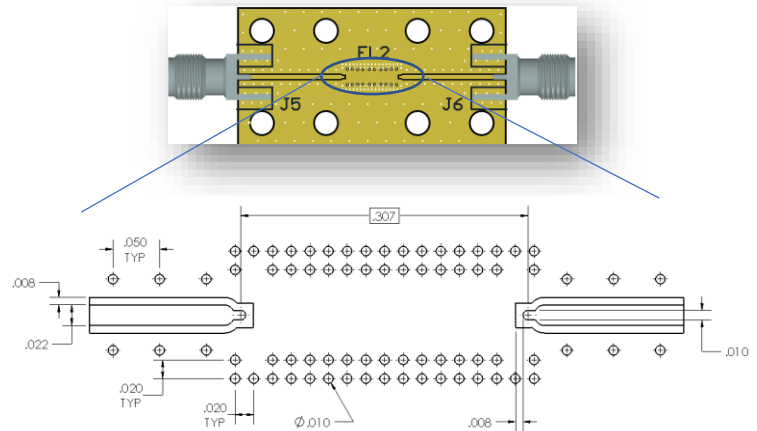
BP036BW01S

RECOMMENDED BOARD FOOTPRINT



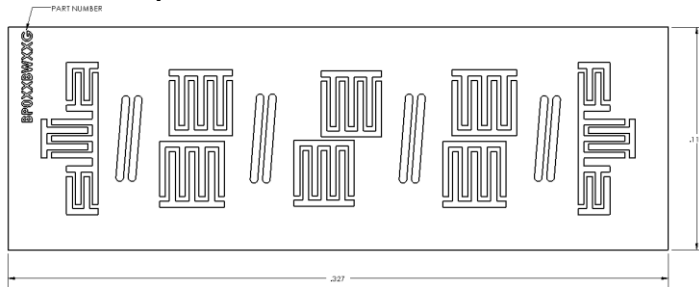
Functional Block Diagram

GCPW:
 W=22mils
 G=8mils
 H=14mils
 Er=3.7

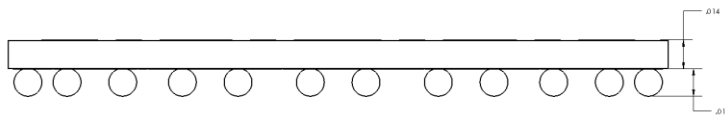
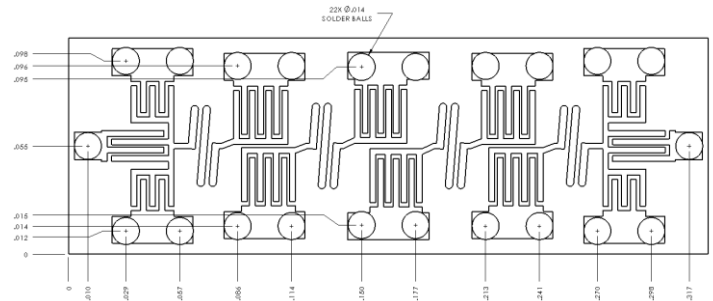


COMPONENT OUTLINE

Top View



Bottom View



PART NUMBER DESCRIPTION

